

Thank You! for purchasing The Gunner Ground Blind

Be sure to follow these guidelines for using your Product. **READ AND UNDERSTAND ALL INSTRUCTIONS and WARNINGS FIRST**

Any questions or confusion regarding the use of this product contact our Customer Service Department.



AMERISTEP
Quality Hunting

THE GUNNER GROUND BLIND

Instruction and Safety Manual

STORAGE AND TIPS

- Store Blind in a cool dry place - free native brush, dirt and any debris
- Never store Blind wet or damp
- Avoid leaving Blind outdoors for any extended period of time. Prolonged exposure to sunlight may cause fabric to fade.
- To stop any leakage, use seam sealer on all seams and silicon spray on seams/sidewalls.
- To store your TSC windows and/or Shoot-Through Mesh (if included with Blind or purchased separately), avoid wrinkles and creases that could significantly reduce visibility
- To aid in folding blind be sure the window curtain is all the way up and secured

WARNING

! WARNING: KEEP ALL FLAME AND HEAT SOURCES AWAY FROM TENT FABRIC.

The fabric will burn if left in continuous contact with a flame source. It is not fireproof. Do not use candles, matches or open flames of any kind in or near a tent; do not cook inside a tent; do not smoke in a tent; do not store flammable liquids inside a tent; build campfires down-wind and several meters away from a tent and be sure to fully extinguish campfires before leaving a campsite or before retiring for the night; exercise extreme caution when using fuel-powered lanterns or heaters inside a tent and use battery operated lanterns whenever possible; do not refuel lamps, heaters or stoves inside a tent; extinguish or turn off all lanterns before going to sleep.

SET UP



1 Remove BLIND from case.



2 **Step 1:** Hold one of 2 ring sets of steel.



3 **Step 2:** Let other two pop open.



4 **Step 3:** Spread BLIND and stake down. High wind tie-downs are included (if needed)

2010
©2010 (rev 11/09)

TAKE-DOWN INSTRUCTIONS

! Tip: Be sure to remove all native brush, dirt and debris **BEFORE** beginning take down. Remove Ground Stakes.



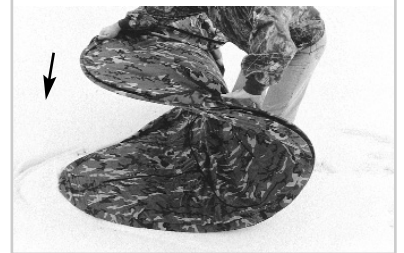
STEP 1: Remove all stakes and tie-downs. Fold blind in half laying it flat on ground.



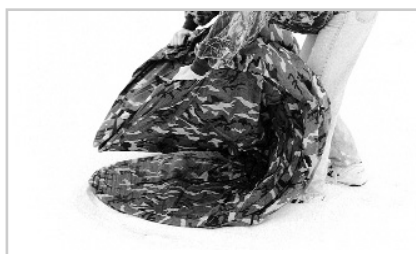
STEP 2: Roll BOTTOM AWAY from body towards ground.



STEP 3: Continue to roll BOTTOM SECTION until it almost touches top of BLIND, forming a "U" Shape.



STEP 4: Once "U" Shape is formed remove one hand and rotate it 180° (degrees) (Right hand counterclockwise or left hand counterclockwise)



STEP 5: Continue to ROLL BOTTOM over until it nearly touches TOP of BLIND.



STEP 6: Now begin to ROTATE HAND in OPPOSITE direction 180° (degrees). This will bring BOTTOM PORTION of BLIND towards you.



STEP 7: Be sure to overlap TWO STEEL BANDS CLOSEST to your legs, the BLIND should collapse with ease.



Insert BLIND into its carry case.

Pack ground stakes, and high wind tie-downs in pouches provided.

PLEASE NOTE: Images used are for demonstration purposes only and may not depict the actual product.

THINK SAFETY !

- NEVER ALLOW CHILDREN TO PLAY WITH THIS PRODUCT WITHOUT ADULT SUPERVISION
- NEVER USE A HEATER IN YOUR AMERISTEP® BLIND - UNVENTED FUMES COULD CAUSE SICKNESS OR DEATH

• UV (ULTRAVIOLET LIGHT) WARNING:

Ultraviolet light breaks down lightweight fabric fibers (and almost any synthetic material). The material will fade (discolor), lose strength and eventually disintegrate if left in prolonged sunlight. To extend the life of your Ameristep® product avoid leaving it out in direct sunlight. Set up your portable ground blind or accessory in a shady spot whenever possible to extend the product life.